



# AC2600 MU-MIMO Wi-Fi Router

Affordable & High-Performance

Archer A10



1733Mbps + 800Mbps  
Dual Band Wi-Fi



Superior Wi-Fi  
Coverage



MU-MIMO

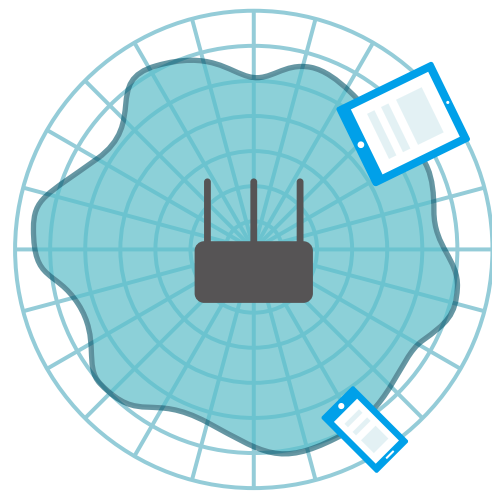


Smart  
Connect

# Highlights

## 4 Antennas&Beamforming for Maximum Coverage

Equipped with three external and one internal antennas, Archer A10 creates stronger and more reliable networks for all to enjoy in your home. Beamforming technology concentrates the Wi-Fi signal towards your connected devices, providing better Wi-Fi range and network performance.



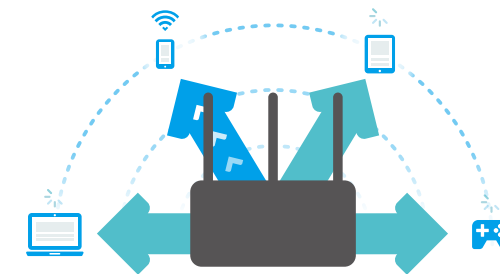
Regular Router



Archer A10

## MU-MIMO for 4× Faster Connections

MU-MIMO technology serves multiple devices at once, reducing wait time, increasing Wi-Fi throughput for every device, and making each stream more efficient.



Traditional Router  
Sends data to one device at a time

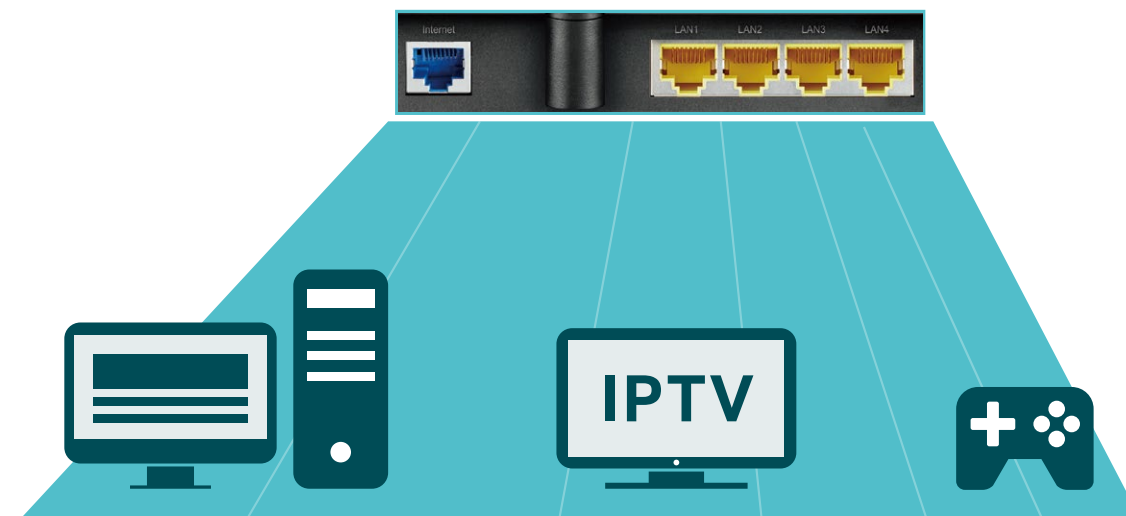


MU-MIMO Router  
Simultaneously sends data to multiple devices

# Highlights

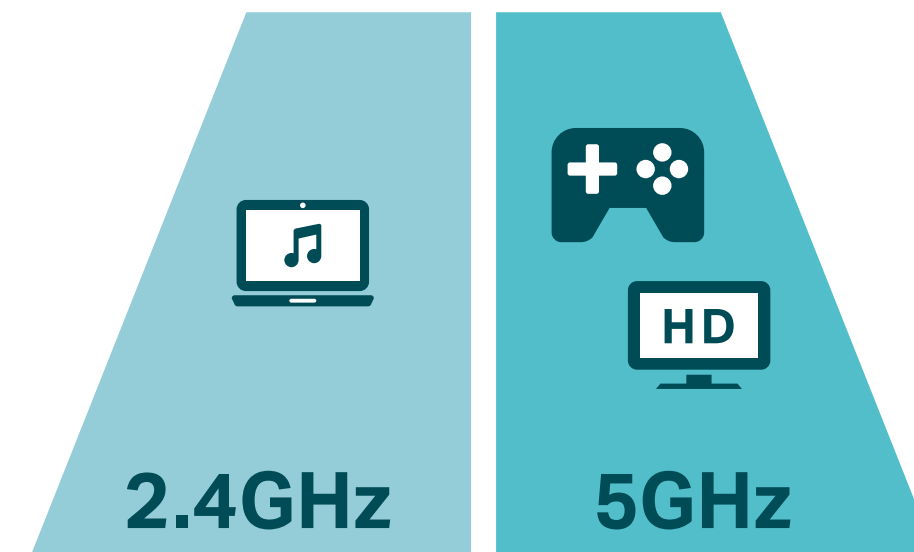
## Full Gigabit Ports

A Gigabit WAN port enables bottleneck-free access bandwidth. 4 Gigabit LAN ports help wired devices achieve peak performance for HD streaming and gaming.



## Smart Connect

Smart Connect technology surveys the Wi-Fi environment to intelligently assign devices to the best available band, balancing the network load to give each device optimized connection and throughput.

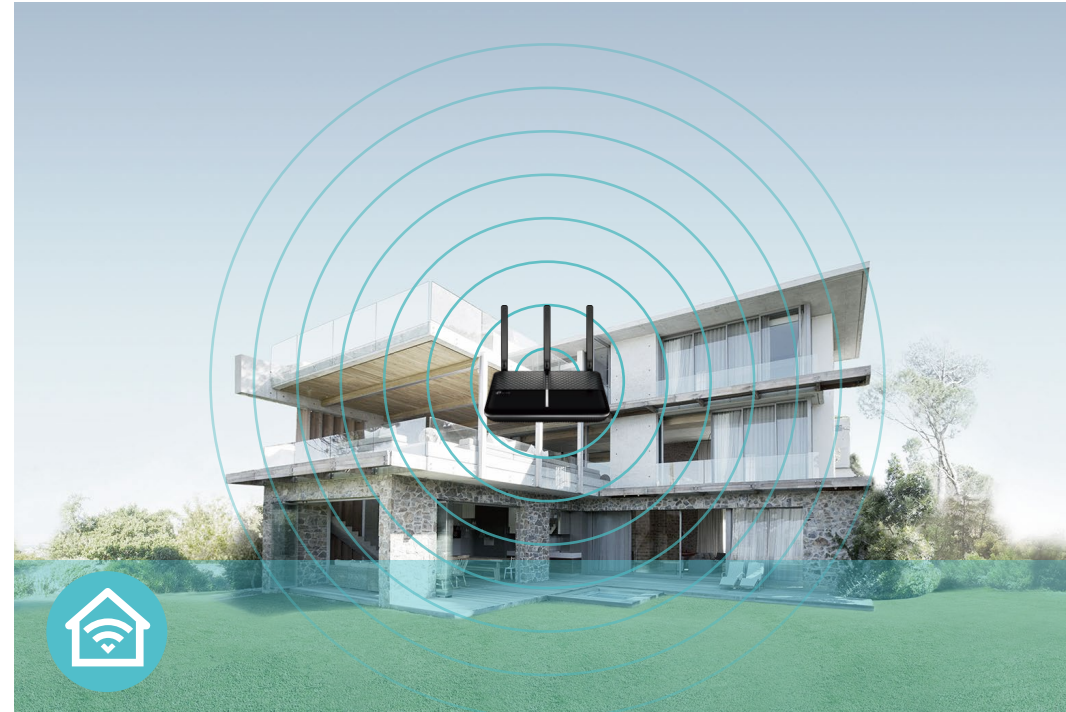


# Features



## Speed

- **Ultra-Fast Dual-Band Wi-Fi** – Combined wireless speeds up to 800Mbps (over 2.4GHz) and 1733Mbps (over 5GHz)
- **MU-MIMO Technology** – Simultaneously exchanges data with several devices, achieving speeds which are 4x faster than standard AC routers
- **Support 802.11 ac** – Provides a data transfer rate 3 times faster than 802.11n for each stream



## Wi-Fi Range

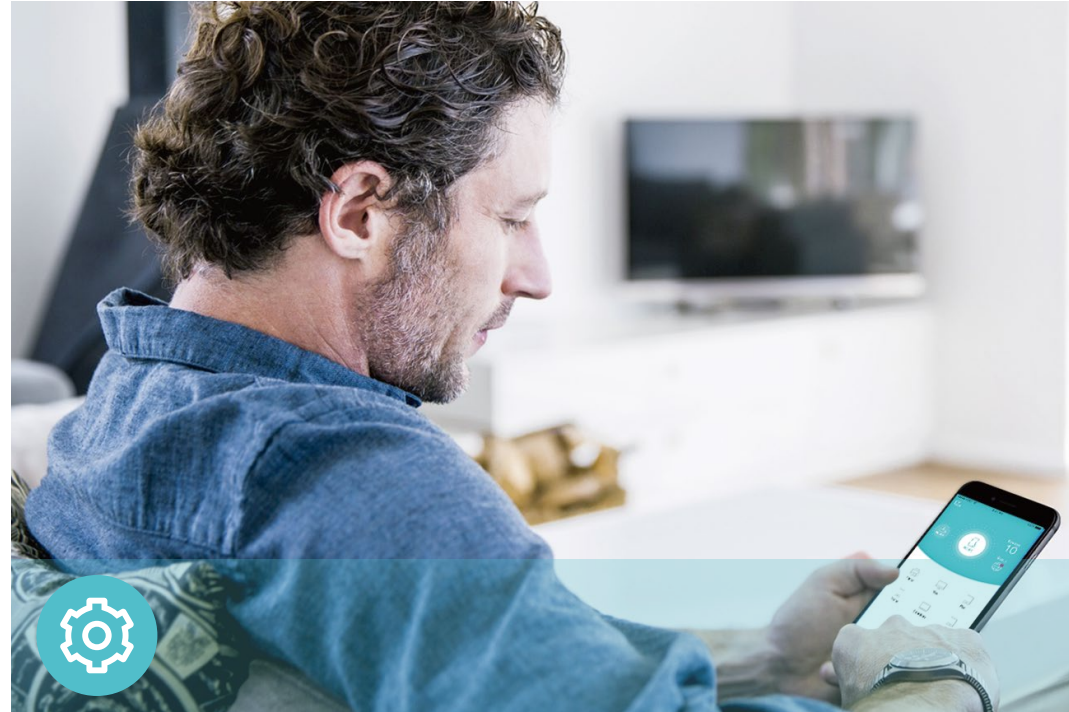
- **Boosted Wireless Coverage** – 3 external and 1 internal dual band high-performance antennas ensure the widespread Wi-Fi coverage and a stable connection
- **Beamforming Technology** – Concentrates the Wi-Fi signal towards your Wi-Fi devices, delivering highly targeted and efficient Wi-Fi connections



## Reliability

- **Simultaneous Dual Band** – Separate Wi-Fi bands enable more devices to connect to your network without a drop in performance
- **Easy Bandwidth Management** – Advanced QoS makes it easier for you to manage the bandwidth of connected devices
- **Airtime Fairness** – Equally divides attention among all your devices, letting your high-speed devices transfer more data and improving network efficiency
- **Smart Connect** – Intelligently assigns each device to the best available Wi-Fi band

# Features



## Ease of Use

- Intuitive Web UI – Ensures quick and simple Installation without hassle
- Fast Encryption – One-touch WPA wireless security encryption with the WPS button
- Hassle-free Management with Tether App – Provides an easy way to set up and manage your router
- Works with IFTTT – Trigger actions when devices are connecting to your network and set triggers to prioritize a device or an activity with anything that works with IFTTT



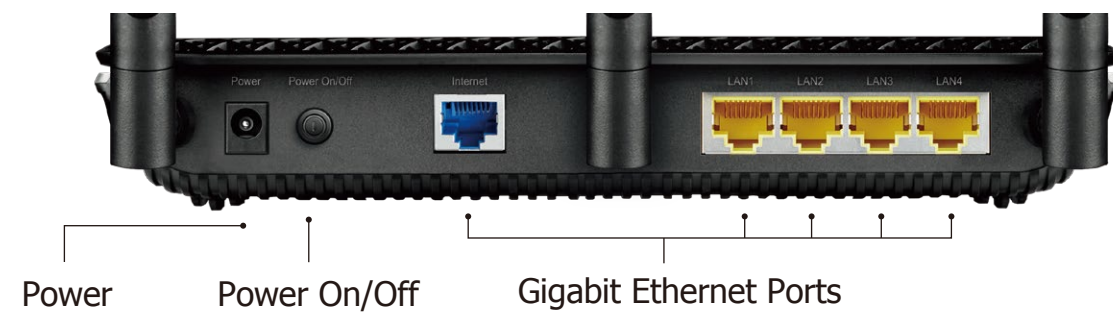
## Security

- Guest Network – Keeps your main network secure by creating a separate network for friends and visitors
- Access Control – Establishes a whitelist or blacklist to allow or restrict certain devices to access the internet
- Parental Controls – Restricts internet access time and contents for children devices
- VPN Server – PPTP VPN and OpenVPN are supported, making it easy to set up a secure connection between your private networks to the internet
- Encryptions for Secure Network – WPA-PSK and WPA2-PSK encryptions provide active protection against security threats

# Specifications

## Hardware

- Ethernet Ports: 4 Gigabit LAN Ports, 1 Gigabit WAN Port
- Buttons: WiFi On/Off Button, Power On/Off Button, Reset Button, WPS Button
- Antennas: 3 External Antennas, 1 Internal Antenna
- External Power Supply: 12VDC/1.5A
- Dimensions (W x D x H): 8.5 × 6.5 × 1.4 in. (216 × 164 × 36.8 mm)



## Wireless

- Wireless Standards: IEEE 802.11ac/n/a 5GHz, IEEE 802.11b/g/n 2.4GHz
- Frequency: 2.4GHz and 5GHz
- Signal Rate: 1733Mbps at 5GHz, 800Mbps at 2.4GHz
- Transmit Power:  
FCC: <30dBm(2.4GHz), <30dBm(5GHz)
- Reception Sensitivity:  
5GHz:  
11ac80M MCS9: -64dBm, 11ac80M MCS0: -89dBm  
11ac40M MCS9: -68dBm, 11ac40M MCS0: -92dBm  
11ac20M MCS8: -72dBm, 11ac20M MCS0: -95dBm  
54M: -78dBm, 6M: -96dBm  
2.4GHz:  
11n40M MCS9: -68dBm, 11n40M MCS0: -93dBm  
11n20M MCS8: -73dBm, 11n20M MCS0: -96dBm  
54M: -78dBm, 6M: -97dBm
- Wireless Function: Enable/Disable Wireless Radio, WDS Bridge, WMM, Wireless Statistics
- Wireless Security: Enable/Disable SSID Broadcast, 64/128-bit WEP, WPA/WPA2, WPA-PSK/WPA-PSK2 encryptions, QSS, Wireless MAC Filter

# Specifications

## Software

- Quality of Service: WMM, Bandwidth Control
- WAN Type: Dynamic IP, Static IP, PPPoE, PPTP(Dual Access), L2TP(Dual Access)
- Management: Access Control, Local Management, Remote Management
- DHCP: Server, DHCP Client List, Address Reservation
- Port Forwarding: Virtual Server, Port Triggering, UPnP, DMZ
- Dynamic DNS: DynDns, NO-IP, TP-Link
- Access Control: Parental Controls, Local Management Control, Blacklist, Whitelist
- Firewall Security: DoS, SPI Firewall, IP and MAC Address Binding
- Protocols: IPv4, IPv6
- Guest Network: 2.4GHz Guest Network , 5GHz Guest Network

## Others

- Certification:  
FCC, CE, RoHS, RCM, IC, NCC, BSMI
- System Requirements:  
Microsoft Windows 98SE/NT/2000/XP/Vista™/7/8/8.1/10, MAC OS, NetWare, UNIX or Linux  
  
Internet Explorer 11, Firefox 12.0, Chrome 20.0, Safari 4.0, or other Java-enabled browser  
  
Cable or DSL Modem  
  
Subscription with an internet service provider (for internet access)
- Environment:  
Operating Temperature: 0°C~40°C (32°F ~104°F)  
Storage Temperature: -40°C~70°C (-40°F ~158°F)  
Operating Humidity: 10%~90% non-condensing  
Storage Humidity: 5%~90% non-condensing
- Package Contents  
Wireless Router Archer A10  
  
Power Adapter  
  
RJ45 Ethernet Cable  
  
Quick Installation Guide



For more information, please visit

<https://www.tp-link.com/products/details/Archer-A10.html>

or scan the QR code left

Specifications are subject to change without notice. TP-Link is a registered trademark of TP-Link Technologies Co., Ltd. Other brands and product names are trademarks or registered trademarks of their respective holders. Copyright ©2019 TP-Link Technologies Co., Ltd. All rights reserved.

\*Maximum wireless signal rates are the physical rates derived from IEEE Standard 802.11 specifications. Actual wireless data throughput and wireless coverage are not guaranteed and will vary as a result of network conditions, client limitations, and environmental factors, including building materials, obstacles, volume and density of traffic, and client location.

\*Use of MU-MIMO requires clients to also support MU-MIMO.

\*Three or more 1×1 MU-MIMO-enabled client devices must be connected to achieve three (3) times faster performance.

[www.tp-link.com](http://www.tp-link.com)

TP-Link AC2600 MU-MIMO Wi-Fi Router **Archer A10**